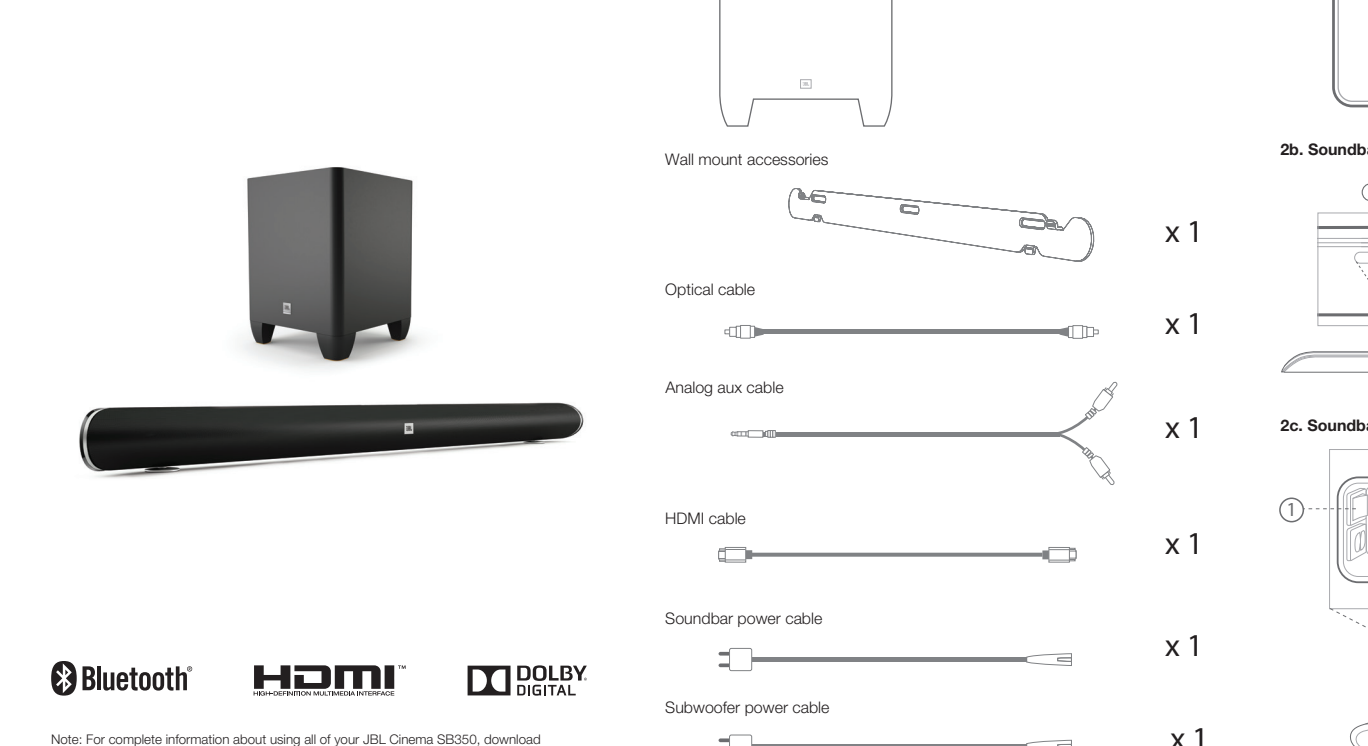


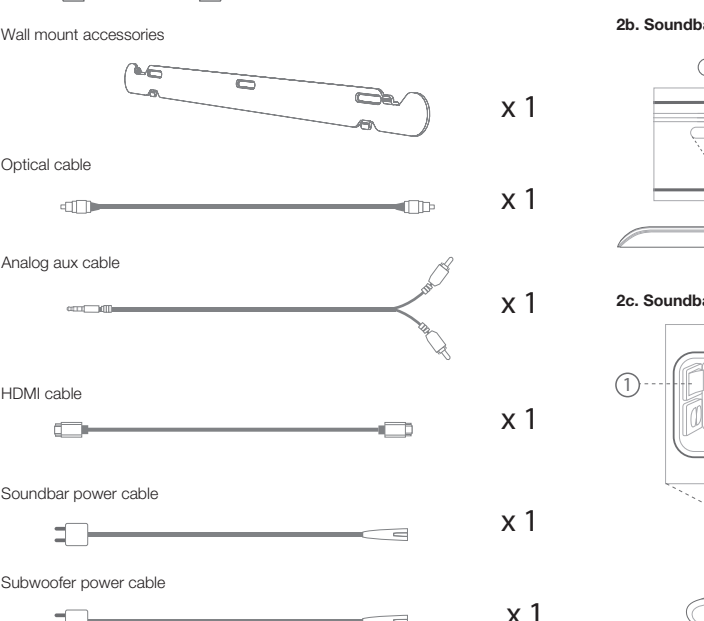
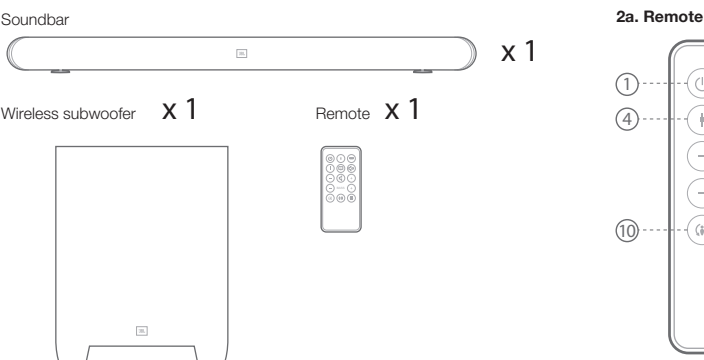


### Quick Start Guide

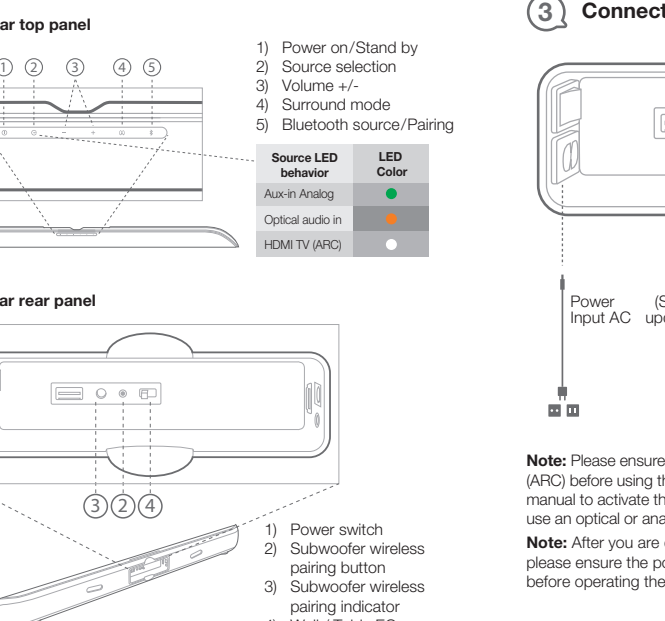
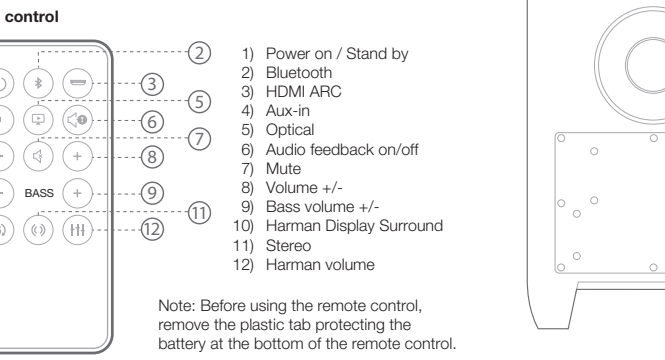


Note: For complete information about using all of your JBL Cinema SB350, download the User's Manual from www.jbl.com.

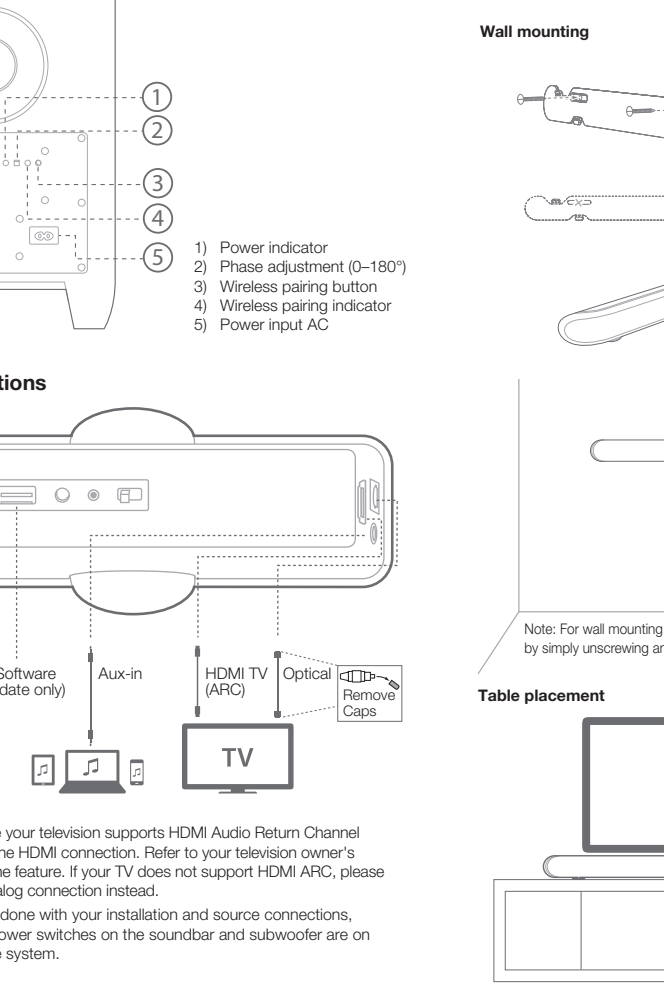
## 1 What's in the box



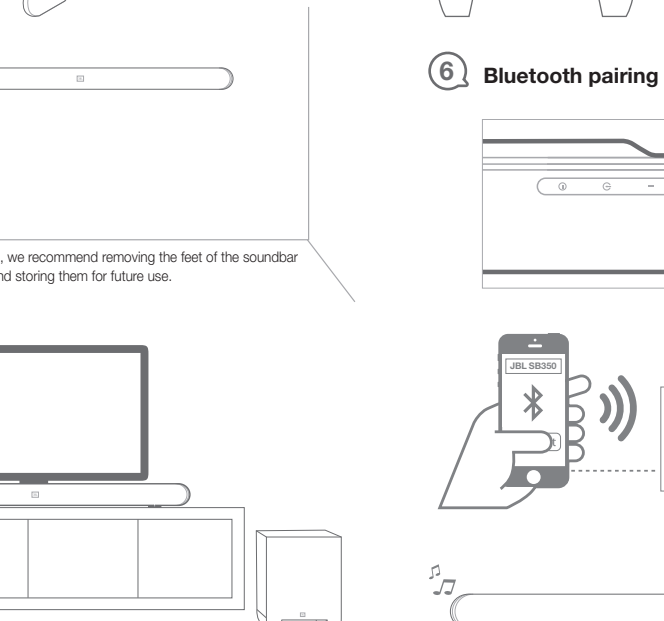
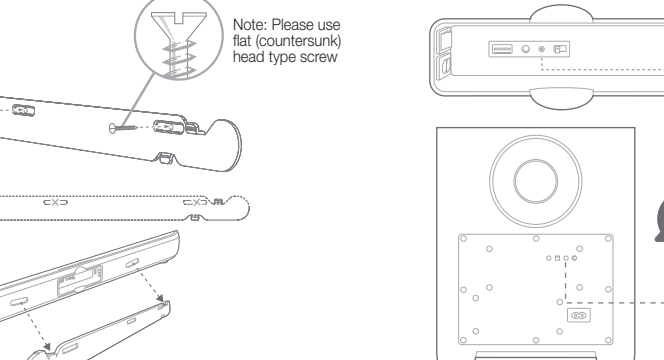
## 2 Buttons and Controls



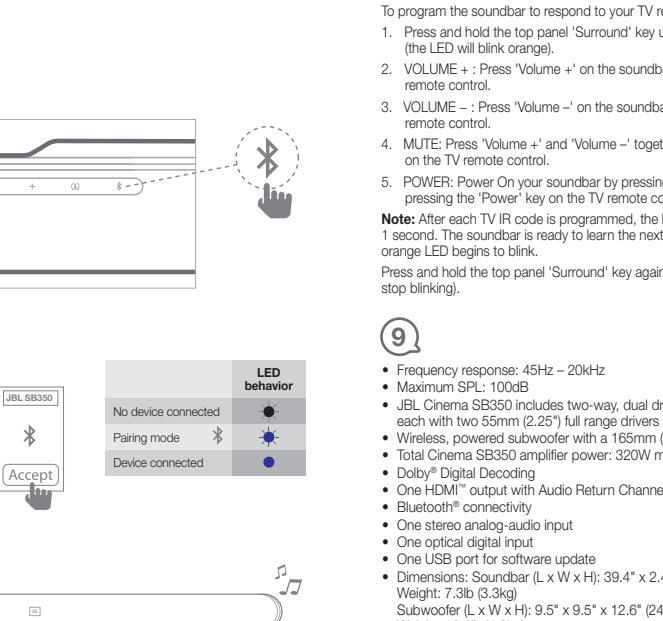
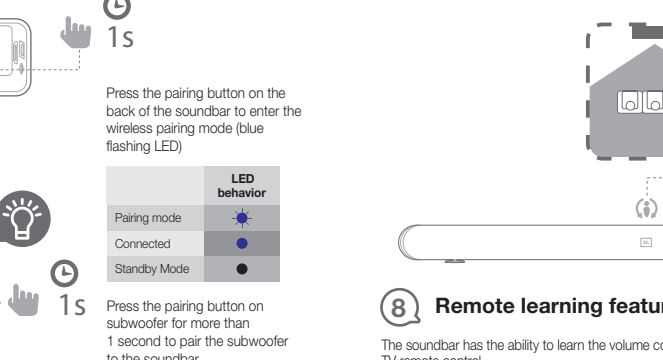
## 3 Connections



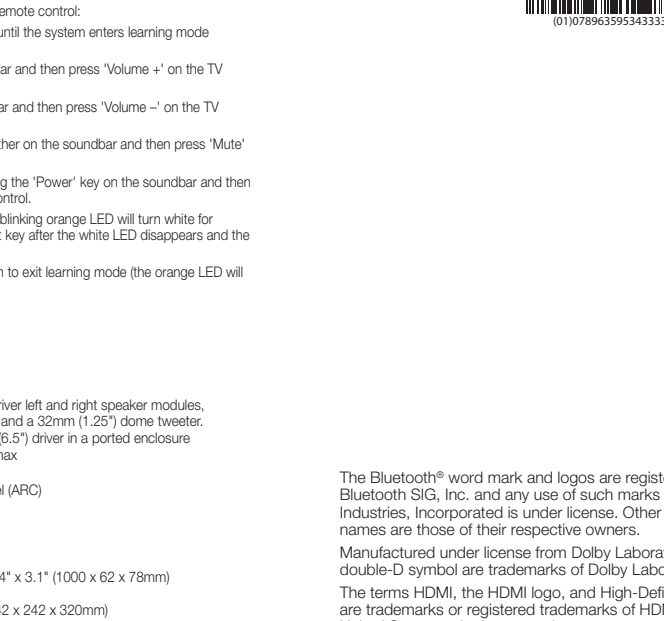
## 4 Placement



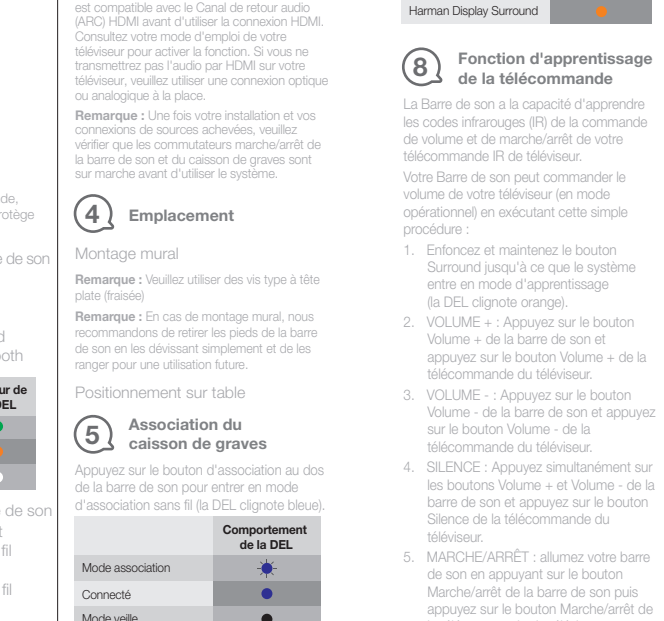
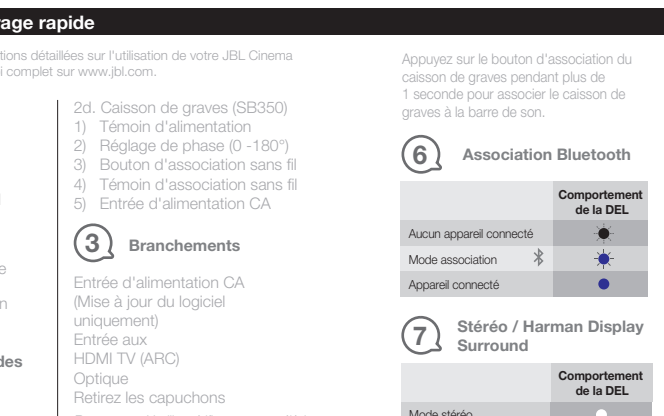
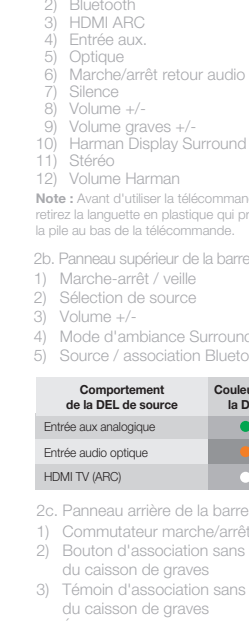
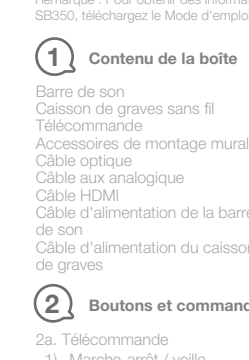
## 5 Subwoofer pairing



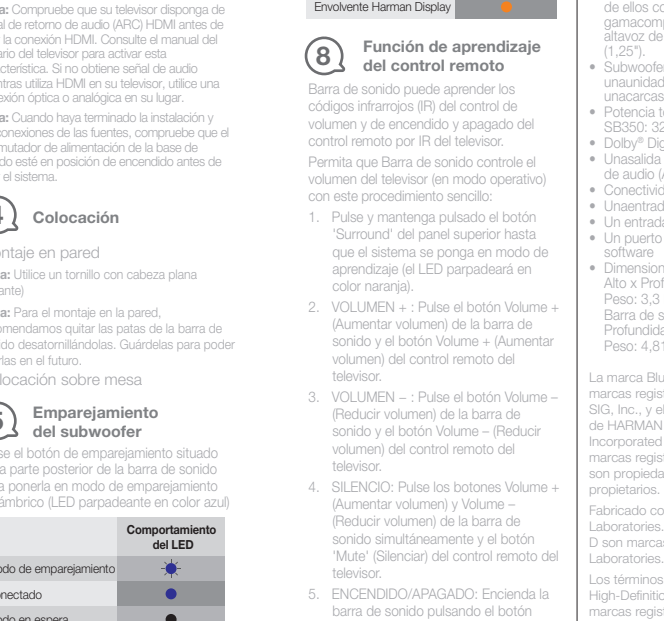
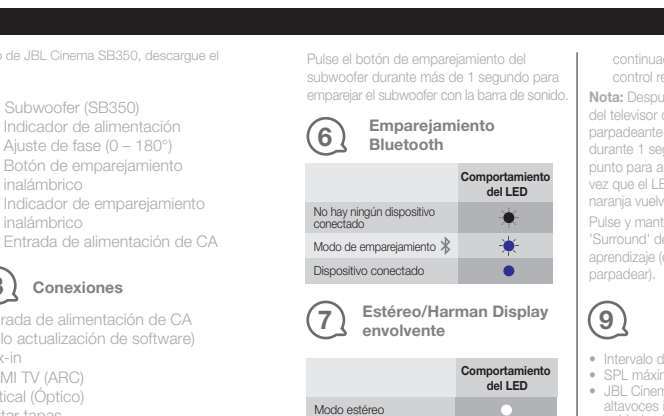
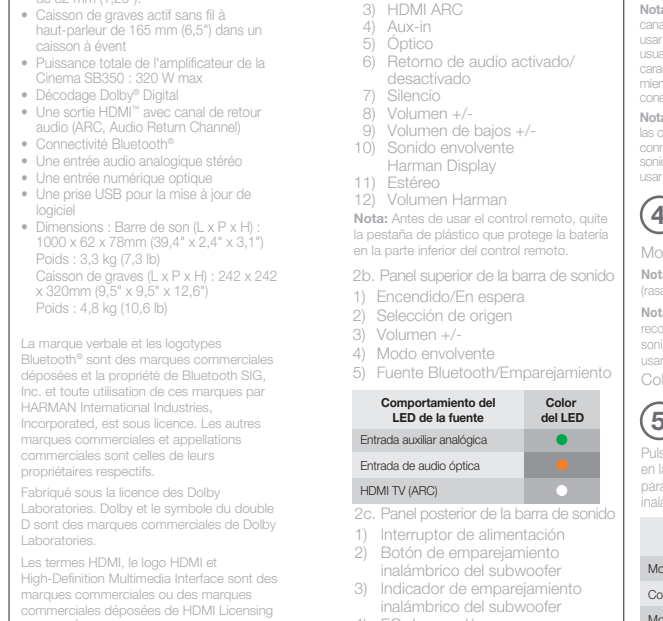
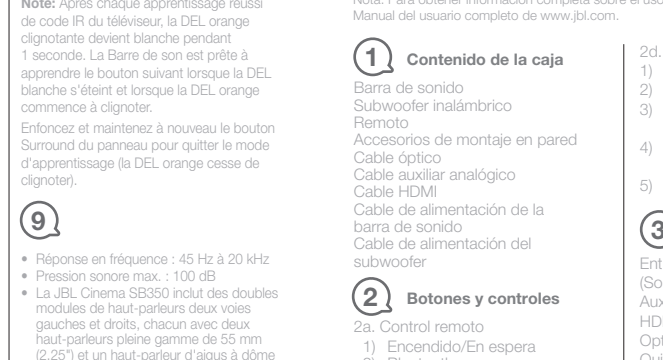
## 7 Stereo / Harman Display Surround



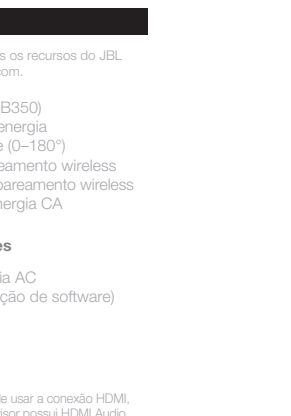
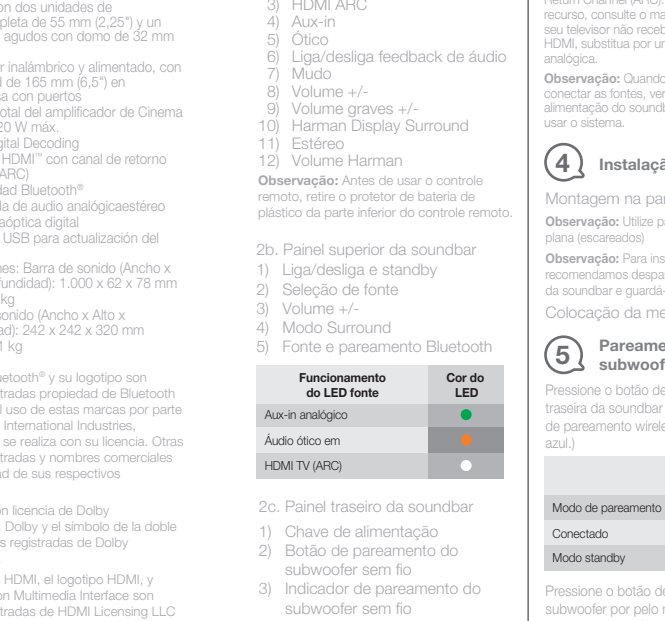
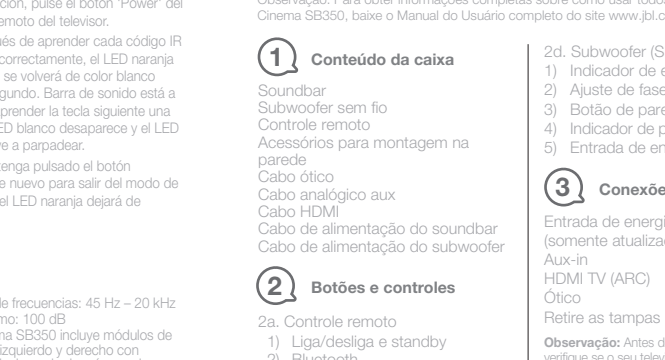
## FR Guide de démarrage rapide



## ES Guía de inicio rápido



## PT Guia de Início Rápido



## 6 Paramento Bluetooth

Pressione e mantenha pressionada a tecla "Power" do painel para sair do modo de reprodução. O LED verde piscará em ritmo de parpaqueio.

## 7 Entere / Harman Display Surround

Para fazer com que o Subwoofer controle o volume da sua TV automaticamente, o procedimento é o seguinte:

## DE Kurzanleitung

Hinweis: vollständige Informationen über die Verwendung des JBL Cinema SB350 finden Sie in der Bedienungsanleitung. Du wirst immer zum zentralen Lautsprecher.

## 2 Tasten und Bedienelemente

1. Einschalt-/Standby (Power) Taste an der Oberseite des Gerätes. 2. Subwoofer wireless pairing button.

## 1 Verpackungsinhalt

1. Soundbar 2. Drahtloser Subwoofer 3. Fernbedienung 4. Optische Kabel 5. Analoges AUX-Kabel 6. HDMI-Kabel 7. Subwoofer-Netztafel 8. Subwoofer-Stecktafel

## 3 Anschlüsse

1. Stereo / Harman Display Surround 2. Bluetooth-Pairing 3. HDMI / ARC 4. AUX-Enging 5. Optischer Anschluss 6. Audio Feedback-Anschluss 7. Subwoofer-Stecktafel 8. Subwoofer-Netztafel

## 2a. Subwoofer (SB350)

1. Einschalt-/Standby (Power) Taste an der Oberseite des Gerätes. 2. Subwoofer wireless pairing button.

## 2b. Subwoofer Rear Panel

1. Power on/Standby by Source selection 2. Volume +/- 3. Surround mode 4. Bluetooth source/Pairing

## 2b. Subwoofer (SB350)

1. Einschalt-/Standby (Power) Taste an der Oberseite des Gerätes. 2. Subwoofer wireless pairing button.

## 2c. Subwoofer Front Panel

1. Power on/Standby by Source selection 2. Volume +/- 3. Surround mode 4. Bluetooth source/Pairing

## 2a. Subwoofer (SB350)

1. Einschalt-/Standby (Power) Taste an der Oberseite des Gerätes. 2. Subwoofer wireless pairing button.

## 2b. Subwoofer Rear Panel

1. Power on/Standby by Source selection 2. Volume +/- 3. Surround mode 4. Bluetooth source/Pairing

## 2a. Subwoofer (SB350)

1. Einschalt-/Standby (Power) Taste an der Oberseite des Gerätes. 2. Subwoofer wireless pairing button.

## 2b. Subwoofer Rear Panel

1. Power on/Standby by Source selection 2. Volume +/- 3. Surround mode 4. Bluetooth source/Pairing

## 2a. Subwoofer (SB350)

1. Einschalt-/Standby (Power) Taste an der Oberseite des Gerätes. 2. Subwoofer wireless pairing button.

## 2b. Subwoofer Rear Panel

1. Power on/Standby by Source selection 2. Volume +/- 3. Surround mode 4. Bluetooth source/Pairing

## 2a. Subwoofer (SB350)

1. Einschalt-/Standby (Power) Taste an der Oberseite des Gerätes. 2. Subwoofer wireless pairing button.

## 2b. Subwoofer Rear Panel

1. Power on/Standby by Source selection 2. Volume +/- 3. Surround mode 4. Bluetooth source/Pairing

## 2a. Subwoofer (SB350)

1. Einschalt-/Standby (Power) Taste an der Oberseite des Gerätes. 2. Subwoofer wireless pairing button.

## 2b. Subwoofer Rear Panel

1. Power on/Standby by Source selection 2. Volume +/- 3. Surround mode 4. Bluetooth source/Pairing

## 2a. Subwoofer (SB350)

1. Einschalt-/Standby (Power) Taste an der Oberseite des Gerätes. 2. Subwoofer wireless pairing button.

## 2b. Subwoofer Rear Panel

1. Power on/Standby by Source selection 2. Volume +/- 3. Surround mode 4. Bluetooth source/Pairing

## 2a. Subwoofer (SB350)

1. Einschalt-/Standby (Power) Taste an der Oberseite des Gerätes. 2. Subwoofer wireless pairing button.

## 2b. Subwoofer Rear Panel

1. Power on/Standby by Source selection 2. Volume +/- 3. Surround mode 4. Bluetooth source/Pairing

## 2a. Subwoofer (SB350)

1. Einschalt-/Standby (Power) Taste an der Oberseite des Gerätes. 2. Subwoofer wireless pairing button.

## 2b. Subwoofer Rear Panel

1. Power on/Standby by Source selection 2. Volume +/- 3. Surround mode 4. Bluetooth source/Pairing

## 2a. Subwoofer (SB350)

1. Einschalt-/Standby (Power) Taste an der Oberseite des Gerätes. 2. Subwoofer wireless pairing button.

## 2b. Subwoofer Rear Panel

1. Power on/Standby by Source selection 2. Volume +/- 3. Surround mode 4. Bluetooth source/Pairing

## 2a. Subwoofer (SB350)

1. Einschalt-/Standby (Power) Taste an der Oberseite des Gerätes. 2. Subwoofer wireless pairing button.

## 2b. Subwoofer Rear Panel

1. Power on/Standby by Source selection 2. Volume +/- 3. Surround mode 4. Bluetooth source/Pairing

## 2a. Subwoofer (SB350)

1. Einschalt-/Standby (Power) Taste an der Oberseite des Gerätes. 2. Subwoofer wireless pairing button.

## 2b. Subwoofer Rear Panel

1. Power on/Standby by Source selection 2. Volume +/- 3. Surround mode 4. Bluetooth source/Pairing

## 2a. Subwoofer (SB350)

1. Einschalt-/Standby (Power) Taste an der Oberseite des Gerätes. 2. Subwoofer wireless pairing button.

## 2b. Subwoofer Rear Panel

1. Power on/Standby by Source selection 2. Volume +/- 3. Surround mode 4. Bluetooth source/Pairing

## 2a. Subwoofer (SB350)

1. Einschalt-/Standby (Power) Taste an der Oberseite des Gerätes. 2. Subwoofer wireless pairing button.

## 2b. Subwoofer Rear Panel

1. Power on/Standby by Source selection 2. Volume +/- 3. Surround mode 4. Bluetooth source/Pairing

## 2a. Subwoofer (SB350)

1. Einschalt-/Standby (Power) Taste an der Oberseite des Gerätes. 2. Subwoofer wireless pairing button.

## 2b. Subwoofer Rear Panel

1. Power on/Standby by Source selection 2. Volume +/- 3. Surround mode 4. Bluetooth source/Pairing

## 2a. Subwoofer (SB350)

1. Einschalt-/Standby (Power) Taste an der Oberseite des Gerätes. 2. Subwoofer wireless pairing button.

## 2b. Subwoofer Rear Panel

1. Power on/Standby by Source selection 2. Volume +/- 3. Surround mode 4. Bluetooth source/Pairing

## 2a. Subwoofer (SB350)

1. Einschalt-/Standby (Power) Taste an der Oberseite des Gerätes. 2. Subwoofer wireless pairing button.

## 2b. Subwoofer Rear Panel

1. Power on/Standby by Source selection 2. Volume +/- 3. Surround mode 4. Bluetooth source/Pairing

## 2a. Subwoofer (SB350)

1. Einschalt-/Standby (Power) Taste an der Oberseite des Gerätes. 2. Subwoofer wireless pairing button.

## 2b. Subwoofer Rear Panel

1. Power on/Standby by Source selection 2. Volume +/- 3. Surround mode 4. Bluetooth source/Pairing

## 2a. Subwoofer (SB350)

1. Einschalt-/Standby (Power) Taste an der Oberseite des Gerätes. 2. Subwoofer wireless pairing button.

## 2b. Subwoofer Rear Panel

1. Power on/Standby by Source selection 2. Volume +/- 3. Surround mode 4. Bluetooth source/Pairing

## 2a. Subwoofer (SB350)

1. Einschalt-/Standby (Power) Taste an der Oberseite des Gerätes. 2. Subwoofer wireless pairing button.

## 2b. Subwoofer Rear Panel

1. Power on/Standby by Source selection 2. Volume +/- 3. Surround mode 4. Bluetooth source/Pairing

## 2a. Subwoofer (SB350)

1. Einschalt-/Standby (Power) Taste an der Oberseite des Gerätes. 2. Subwoofer wireless pairing button.

## 2b. Subwoofer Rear Panel

1. Power on/Standby by Source selection 2. Volume +/- 3. Surround mode 4. Bluetooth source/Pairing

## 2a. Subwoofer (SB350)

1. Einschalt-/Standby (Power) Taste an der Oberseite des Gerätes. 2. Subwoofer wireless pairing button.

## 2b. Subwoofer Rear Panel

1. Power on/Standby by Source selection 2. Volume +/- 3. Surround mode 4. Bluetooth source/Pairing

## 2a. Subwoofer (SB350)

1. Einschalt-/Standby (Power) Taste an der Oberseite des Gerätes. 2. Subwoofer wireless pairing button.

## 2b. Subwoofer Rear Panel

1. Power on/Standby by Source selection 2. Volume +/- 3. Surround mode 4. Bluetooth source/Pairing

## 2a. Subwoofer (SB350)

1. Einschalt-/Standby (Power) Taste an der Oberseite des Gerätes. 2. Subwoofer wireless pairing button.

## 2b. Subwoofer Rear Panel

1. Power on/Standby by Source selection 2. Volume +/- 3. Surround mode 4. Bluetooth source/Pairing